

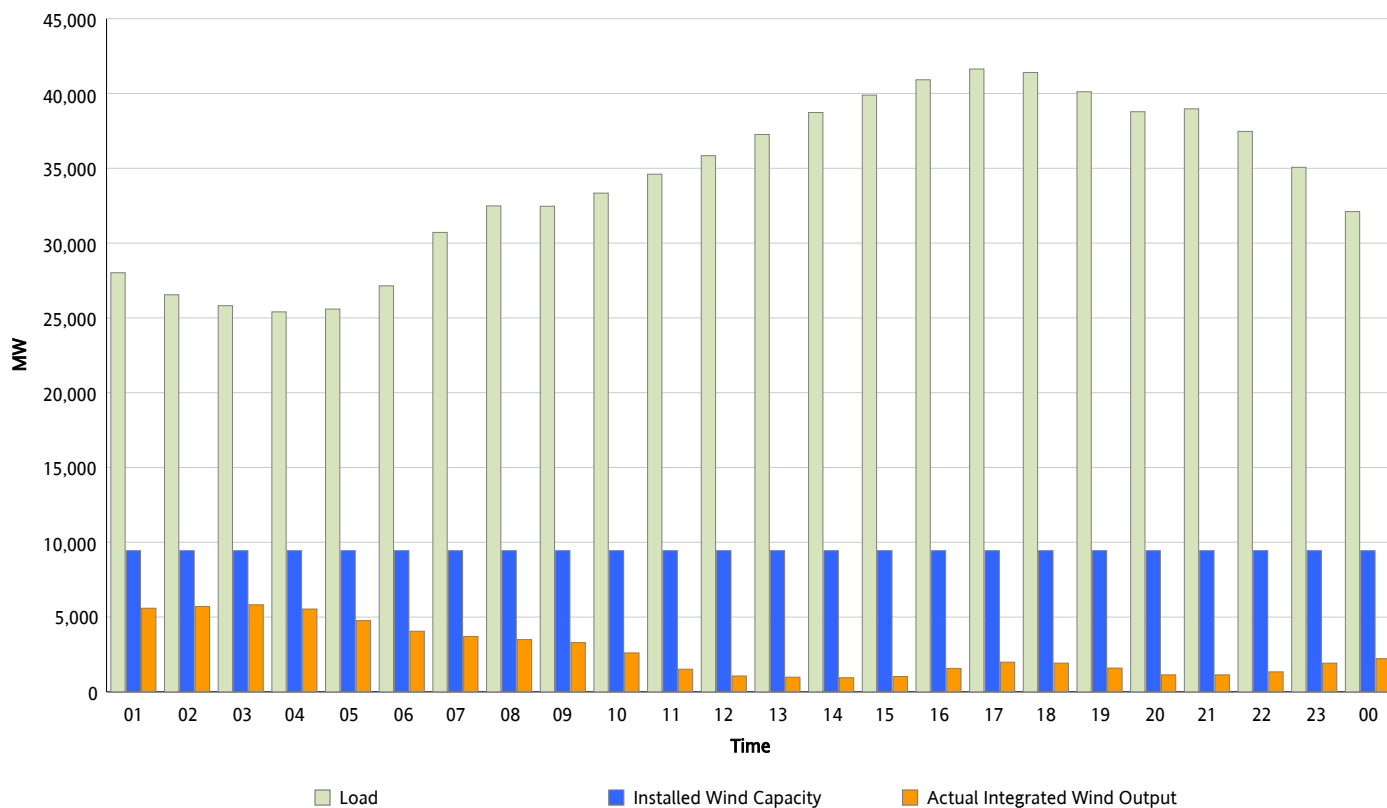


ERCOT Grid Operations

Wind Integration Report : 03/30/2012

Peak Load	41,637 MW
Load Peak Hour (HE)	17
Wind Over Peak	1,985 MW
Wind Record 03/18/12	7,917 MW
Max Wind Value*	6,036 MW
Wind Peak Time	02:29
Wind Integration %	23.3 %

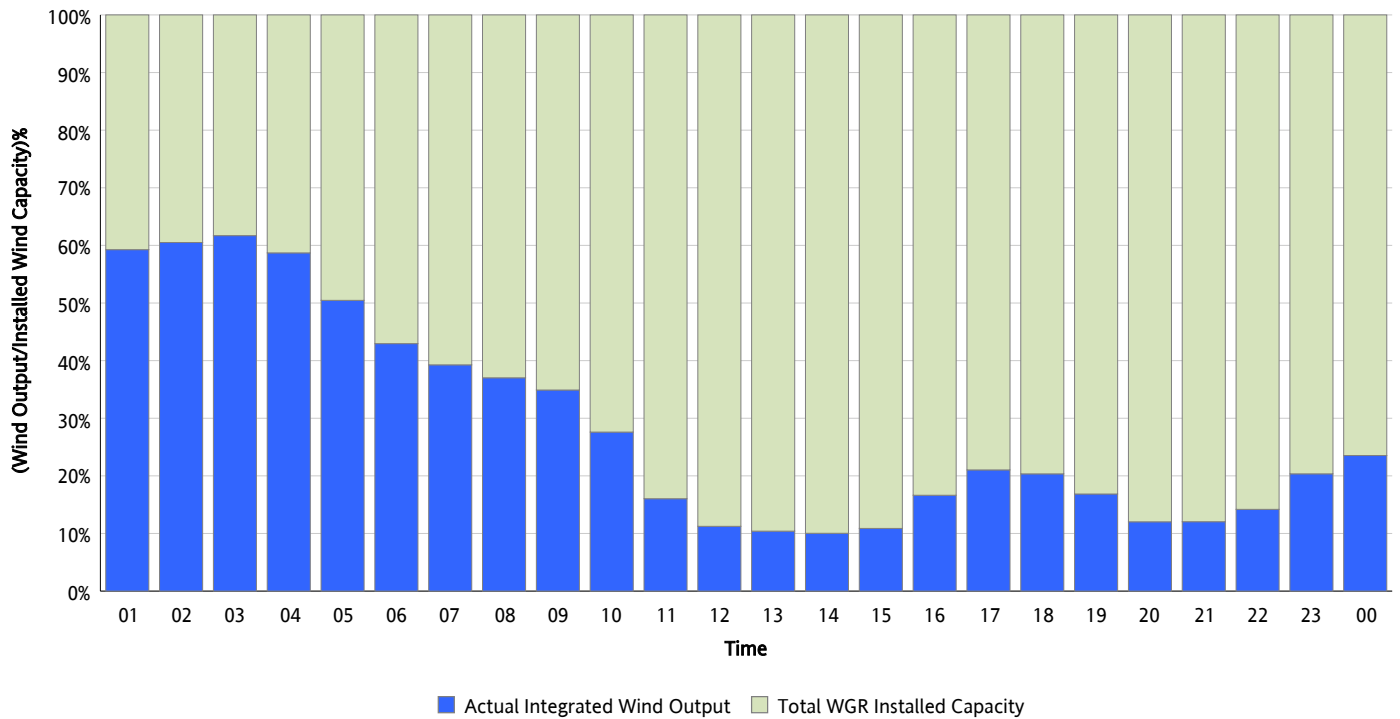
Hourly Average Actual Load vs. Actual Wind Output
03/30/2012



* Wind Record and Wind Max represent instantaneous values and the rest of the values are integrated over the hour

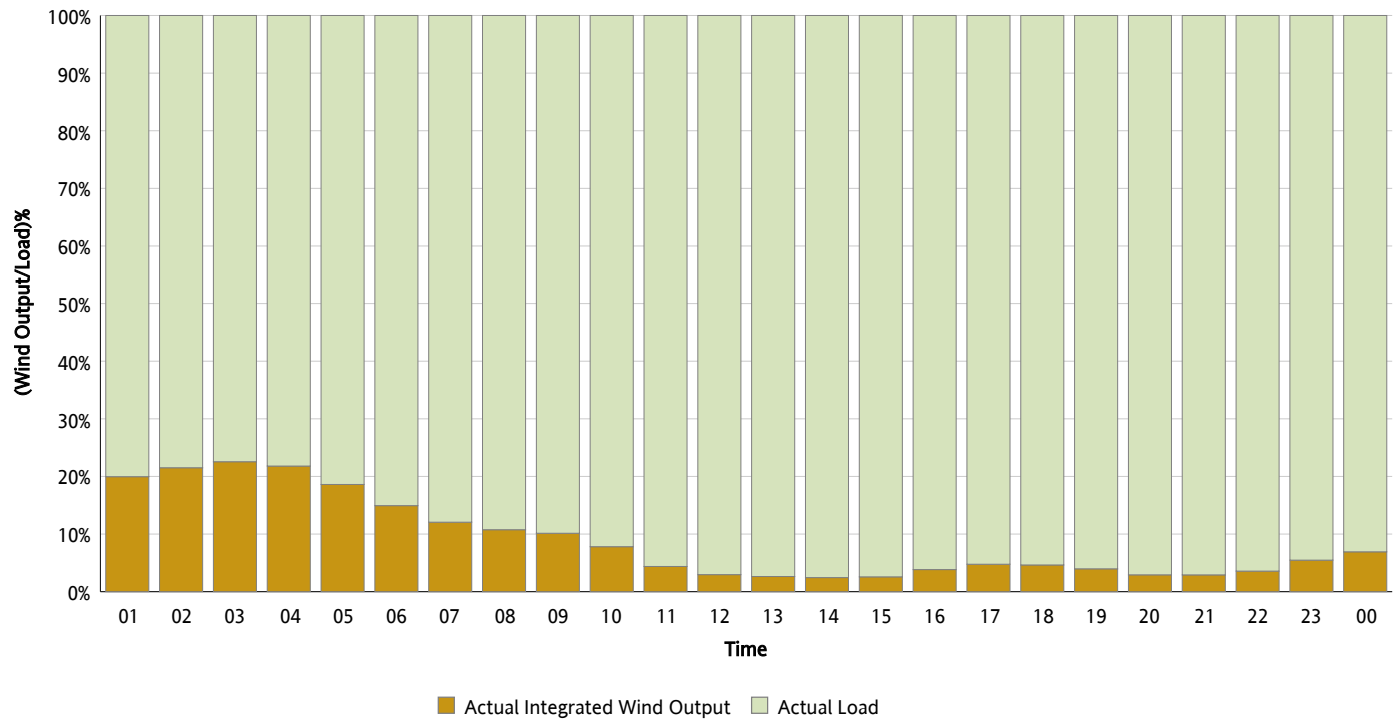
Actual Wind Output as a Percentage of the Total Installed Wind Capacity

03/30/2012



Actual Wind Output as a Percentage of the ERCOT Load

03/30/2012



ERCOT Load vs. Actual Wind Output

03/23/2012 - 03/30/2012

